



INSTITUTIONAL
C A T A L O G U E



SPORT STYLE FROM DENMARK
 **SINCE 1923**

UNDERSTANDING THE ICONS



MOISTURE ABSORBENT

Clothing made with moisture-absorbing materials contains fibers that capture and hold onto sweat.



BEECOOL TECHNOLOGY

The hummel BEECOOL technology is developed to keep you cool and dry.



ANTI-ODOR

Anti-odor technology neutralizes body odour and protects from odour causing microbes, delivering unparalleled, long lasting freshness.



SOFT TOUCH

The finish leaves the fabric with a soft hand and reduces static cling.



BIO WASH

Bio wash just increases the luster, shine, and soft feel.



PIQUE FABRIC

It's breathable, durable and easily cared for and has excellent give and comfort. Its breathable nature also ensures that any wearers of pique stay cool. Furthermore, the textured weave is great at hiding all those perspiration stains.



MESH LINING

Mesh helps let air circulate to increase ventilation so you can cool down and get rid of sweat more quickly.



LIGHTWEIGHT

Combination of fabric, trim and construction to make the garment light.



ANTI-SHRINK

It features anti-shrink functionality for better shape retention.

INDEX



1-4

ABOUT THE BRAND



5-38

T-SHIRTS



39-50

WINTER WEAR

1923 - 2023
100 YEARS OF HUMMEL

THIS IS OUR HISTORY

1923

Albert Messmer develops one of the first football cleats in the world. With his brother Michael Ludwig Messmer, he founds the company Messmer & Co., that will go on to become known as hummel.



1970

hummel is introduced to the Northern European market.

1979

hummel signs a sponsorship deal with the Danish national team for the first time – a deal that lasts until 2004.

1956

The visionary Bernhard Weckenbrock takes over the company. He creates a comprehensive brand identity and introduces the chevrons.

1969

The first sportswear collection is launched. Sponsorships are signed and help boost sales. A rounder version of the bumblebee than the current one is created.

1988

hummel signs a sponsorship deal with Real Madrid and the club's biggest star, Emilio Butragueño. The deal makes hummel products even more popular.



1968

The first sponsorship deal is signed. The deal is with Duisburg, a team playing in the 2nd German Bundesliga.



1992

It's a surprising win, to say the least. The Danish national team takes the title at the European Championships having played Germany in the final.

2020

In 2020 hummel team up with the historic football club Everton FC and return to the Premier League after 13 years of absence. The chevrons are back on the biggest football stage again!



1999

hummel gets a new owner – Thornico. Christian Stadil becomes part of the brand history. He launches a reintroduced, original sport style collection on the fashion market and hummel becomes a trendsetting sports apparel brand.



2019

In 2019, hummel substantiates its status as an original handball brand by signing the German handball club, THW Kiel – unarguably one of the biggest clubs in the World.

2016

After many years hummel once again sponsors a team in the German Bundesliga. SC Freiburg plays a sensational first season after returning to the first league and qualifies for international competition.



1923
100 YEARS IN SPORT

In 2023, we will celebrate a century of hummel – marking 100 years of proud heritage in the world of sports.



1000+ SPONSORSHIPS

hummel is proud to sponsor a powerful, inspiring and unparalleled roster of teams, clubs, and players in countries all over the world. Together, they form #teammummel and in different ways, they bring character, strong social values, and commitment to the game.

To bring some of our key collections to life, we have visited six of the clubs we sponsor and at hummel, we work hard to create even closer relationships with all partners in the years to come.



EVERTON F.C.
EVERTON F.C.
EVERTON F.C.
EVERTON F.C.
EVERTON F.C.
EVERTON F.C.

BACK IN PREMIER LEAGUE

HUMMEL JOINS FORCES WITH EVERTON F.C.

After 13 years of absence from Premier League, the iconic hummel chevrons are finally back on the world's biggest football stage. Starting from the 2020/21 season, hummel will be the technical kit partner for one of the most traditional clubs in the history of English football and Everton FC. The deal will see, 'The People's Club' become hummel's global flagship club partner.

Everton was one of the 12 Founder Members of the Football League and has spent more seasons in England's top division than any other Club. With almost 400 million people worldwide Interested in Everton, the club enjoys massive following both domestically and globally all providing a perfect fit for the hummel brand.



MORE
THAN
ELEVEN



SHARE THE GAME
SHARE THE GAME
SHARE THE GAME



T H W K I E L
 T H W K I E L
 T H W K I E L
 T H W K I E L
 T H W K I E L
 T H W K I E L

GERMAN CHAMPIONS 2020

THW KIEL WON THE GERMAN CHAMPIONSHIP IN 2020

Hummel is proud to sponsor one of the biggest and most successful handball clubs in the world - THW Kiel. In 2019, both parties agreed on a long term six-year deal and already in the first season of the partnership, THW Kiel won the German Championship wearing the iconic hummel chevrons. The partnership is a major statement for hummel in the world of handball

and reinforces hummel's position as a market leader. Together, hummel and THW Kiel are ready to challenge the standards in international handball. It's time to put handball first.



SHARE
THE
GAME



SHARE THE GAME
 SHARE THE GAME
 SHARE THE GAME



T H W
 T H W
 T H W

I E L
 I E L
 I E L

INDIAN SPONSORSHIPS

hummel is proud to sponsor Indian professional football clubs based in various parts of the country, hummel's commitment to change the world through sports continues in India & SEA as it welcomes some of the oldest football clubs in Asia to the chevron family. We are the kit partners for football clubs like the Odisha FC, Hyderabad FC, Mohammedan sporting club,

Sudeva Delhi FC and various events like the Devils Circuit.

Football is ingrained in our brand DNA. It comes with rich heritage in football and multiple partnerships with multiple renowned football clubs.



SHARE
THE
GAME



SHARE THE GAME
 SHARE THE GAME
 SHARE THE GAME

SEEN IN HUMMEL



Kartik Aaryan



Neha Sharma

AS SEEN IN FHM



Nora Fatehi



Rakulpreet Singh



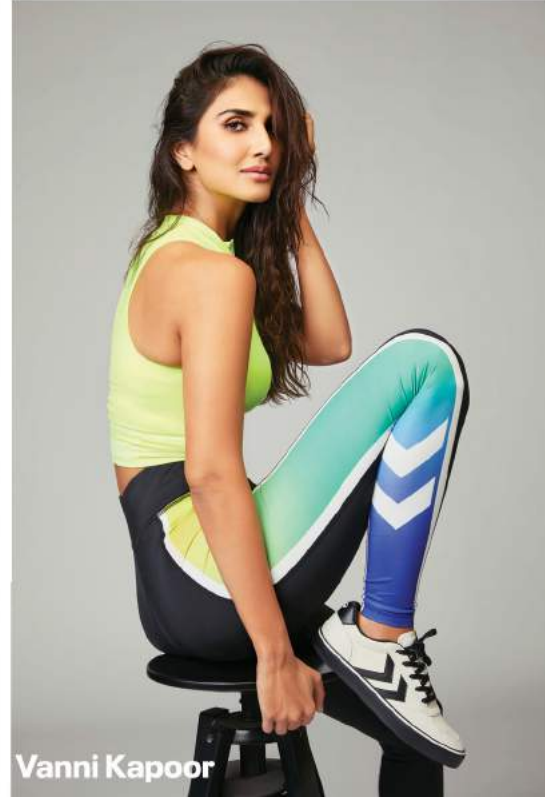
Gurfateh Singh

AS SEEN IN FHM



Aisha Sharma

AS SEEN IN FHM



Vanni Kapoor



Mouni Roy

AS SEEN IN FHM



SOFT COLLAR



SOFT TOUCH



BIO WASH



PIQUE FABRIC

3530001

B2B POLO



SIDE VIEW



BACK VIEW



OUR CLASSIC CHEVRONS



COTTON-POLYESTER

PRODUCT DESCRIPTION

- This hummel polo t-shirt is crafted with pique fabric which has a subtle pattern and texture in the fabric weave.
- The core polo has a soft collar with three-button placket.
- The silhouette offers a regular fit with short sleeves.

COMPOSITION: COTTON-POLYESTER
 GSM: 220 approx.

SIZE CHART

SIZES	S	M	L	XL	XXL	XXXL
FRONT LENGTH	26	27	28	29	30	31
CHEST	38	40	42	44	46	48

SIZES AVAILABLE

S-XXXL

MRP: INR 1499/-

COLOR CODE



Grey
2006



SOFT COLLAR



SOFT TOUCH



BIO WASH



PIQUE FABRIC

3530001

B2B POLO



SIDE VIEW



BACK VIEW



OUR CLASSIC CHEVRONS



COTTON-POLYESTER

PRODUCT DESCRIPTION

- This hummel polo t-shirt is crafted with pique fabric which has a subtle pattern and texture in the fabric weave.
- The core polo has a soft collar with three-button placket.
- The silhouette offers a regular fit with short sleeves.

SIZES AVAILABLE

S-XXXL

MRP: INR 1499/-

COMPOSITION: COTTON-POLYESTER

GSM: 220 approx.

SIZE CHART

SIZES	S	M	L	XL	XXL	XXXL
FRONT LENGTH	26	27	28	29	30	31
CHEST	38	40	42	44	46	48

COLOR CODE



Green
6133



SOFT COLLAR



SOFT TOUCH



BIO WASH



PIQUE FABRIC

3530001

B2B POLO



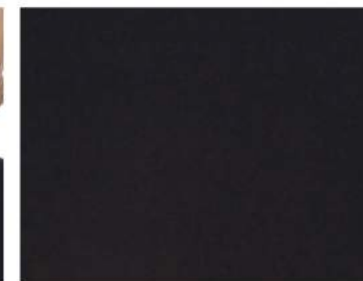
SIDE VIEW



BACK VIEW



OUR CLASSIC CHEVRONS



COTTON-POLYESTER

PRODUCT DESCRIPTION

- This hummel polo t-shirt is crafted with pique fabric which has a subtle pattern and texture in the fabric weave.
- The core polo has a soft collar with three-button placket.
- The silhouette offers a regular fit with short sleeves.

SIZES AVAILABLE

S-XXXL

MRP: INR 1499/-

COMPOSITION: COTTON-POLYESTER

GSM: 220 approx.

SIZE CHART

SIZES	S	M	L	XL	XXL	XXXL
FRONT LENGTH	26	27	28	29	30	31
CHEST	38	40	42	44	46	48

COLOR CODE



Navy
8118



SOFT COLLAR



SOFT TOUCH



BIO WASH



PIQUE FABRIC

3530001
B2B POLO


SIDE VIEW



BACK VIEW



OUR CLASSIC CHEVRONS



COTTON-POLYESTER

PRODUCT DESCRIPTION

- This hummel polo t-shirt is crafted with pique fabric which has a subtle pattern and texture in the fabric weave.
- The core polo has a soft collar with three-button placket.
- The silhouette offers a regular fit with short sleeves.

SIZES AVAILABLE

S-XXXL
MRP: INR 1499/-
COMPOSITION: COTTON-POLYESTER

GSM: 220 approx.

SIZE CHART

SIZES	S	M	L	XL	XXL	XXXL
FRONT LENGTH	26	27	28	29	30	31
CHEST	38	40	42	44	46	48

COLOR CODE


 White
9001



SOFT COLLAR



SOFT TOUCH



BIO WASH



PIQUE FABRIC

3530001
B2B POLO

PAGE 12



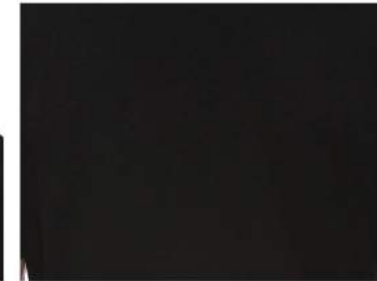
SIDE VIEW



BACK VIEW



OUR CLASSIC CHEVRONS



COTTON-POLYESTER

PRODUCT DESCRIPTION

- This hummel polo t-shirt is crafted with pique fabric which has a subtle pattern and texture in the fabric weave.
- The core polo has a soft collar with three-button placket.
- The silhouette offers a regular fit with short sleeves.

COMPOSITION: COTTON-POLYESTER
 GSM: 220 approx.

SIZE CHART

SIZES	S	M	L	XL	XXL	XXXL
FRONT LENGTH	26	27	28	29	30	31
CHEST	38	40	42	44	46	48

SIZES AVAILABLE

S-XXXL
MRP: INR 1499/-

COLOR CODE


 Black
 2001



ROUND NECK



SOFT TOUCH



BIO WASH

3530004

B2B ROUND NECK COTTON



SIDE VIEW



BACK VIEW



OUR CLASSIC CHEVRONS



100% COTTON

PRODUCT DESCRIPTION

- Crafted in a soft cotton fabric, this hummel t-shirt features a crew neck to make an ultimate statement
- Short sleeves for ease of movement.
- The t-shirt is sporty, stylish and super-comfy.

SIZES AVAILABLE

S-XXXL

MRP: INR 1299/-

COMPOSITION: 100% COTTON

GSM: 180 approx.

SIZE CHART

SIZES	S	M	L	XL	XXL	XXXL
FRONT LENGTH	26	27	28	29	30	31
CHEST	38	40	42	44	46	48

COLOR CODE



Black
2001



ROUND NECK



SOFT TOUCH



BIO WASH

3530004

B2B ROUND NECK COTTON



SIDE VIEW



BACK VIEW



OUR CLASSIC CHEVRONS



100% COTTON

PRODUCT DESCRIPTION

- Crafted in a soft cotton fabric, this hummel t-shirt features a crew neck to make an ultimate statement
- Short sleeves for ease of movement.
- The t-shirt is sporty, stylish and super-comfy.

SIZES AVAILABLE

S-XXXL

MRP: INR 1299/-

COMPOSITION: 100% COTTON

GSM: 180 approx.

SIZE CHART

SIZES	S	M	L	XL	XXL	XXXL
FRONT LENGTH	26	27	28	29	30	31
CHEST	38	40	42	44	46	48

COLOR CODE



White
9001



ROUND NECK



SOFT TOUCH



BIO WASH

3530004

B2B ROUND NECK COTTON



SIDE VIEW



BACK VIEW



OUR CLASSIC CHEVRONS



100% COTTON

PRODUCT DESCRIPTION

- Crafted in a soft cotton fabric, this hummel t-shirt features a crew neck to make an ultimate statement
- Short sleeves for ease of movement.
- The t-shirt is sporty, stylish and super-comfy.

SIZES AVAILABLE

S-XXXL

MRP: INR 1299/-

COMPOSITION: 100% COTTON

GSM: 180 approx.

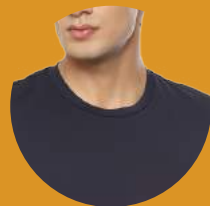
SIZE CHART

SIZES	S	M	L	XL	XXL	XXXL
FRONT LENGTH	26	27	28	29	30	31
CHEST	38	40	42	44	46	48

COLOR CODE



Grey
2006



ROUND NECK



SOFT TOUCH



LIGHTWEIGHT

3430115

GENISE POLY T-SHIRT



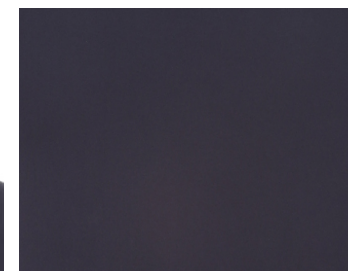
SIDE VIEW



BACK VIEW



OUR CLASSIC CHEVRONS



92% POLY 8% SPANDEX

PRODUCT DESCRIPTION

- The Genise Poly T-shirt is a lightweight and comfortable wearable that boasts exceptional elasticity for a perfect fit.
- Crafted with exceptional elasticity, it offers both comfort and durability.

COMPOSITION : 92% POLY 8% SPANDEX
 GSM : 170 approx.

SIZE CHART

SIZES	S	M	L	XL	XXL	XXXL
FRONT LENGHT	26	27	28	29	30	31
CHEST	38	40	42	44	46	48

SIZES AVAILABLE

S-XXXL

MRP: INR 1399/-

COLOR CODE



Navy
7003



ROUND NECK



SOFT TOUCH



LIGHTWEIGHT



RECYCLED

3430236

ETHEL RECYCLE T-SHIRT



SIDE VIEW



BACK VIEW



OUR CLASSIC CHEVRONS



96% POLY 4% SPANDEX

PRODUCT DESCRIPTION

- 100% Recycled Poly/spandex.
- Mesh Fabric.
- Round neck.
- Half Sleeve.

COMPOSITION : 96% POLY 4% SPANDEX
 GSM : 130 approx.

SIZE CHART

SIZES	S	M	L	XL	XXL	XXXL
FRONT LENGHT	26	27	28	29	30	31
CHEST	38	40	42	44	46	48

SIZES AVAILABLE

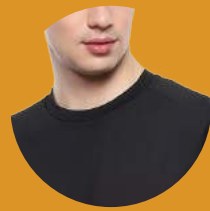
S-XXXL

MRP: INR 1999/-

COLOR CODE



Grey Melange
2006



ROUND NECK



SOFT TOUCH



LIGHTWEIGHT



RECYCLED

3430236

ETHEL RECYCLE T-SHIRT



SIDE VIEW



BACK VIEW



OUR CLASSIC CHEVRONS



96% POLY 4% SPANDEX

PRODUCT DESCRIPTION

- 100% Recycled Poly/spandex.
- Mesh Fabric.
- Round neck.
- Half Sleeve.

COMPOSITION : 96% POLY 4% SPANDEX
 GSM : 130 approx.

SIZE CHART

SIZES	S	M	L	XL	XXL	XXXL
FRONT LENGHT	26	27	28	29	30	31
CHEST	38	40	42	44	46	48

SIZES AVAILABLE

S-XXXL

MRP: INR 1999/-

COLOR CODE



Black
2001



SOFT COLLAR



SOFT TOUCH



BIO WASH



PIQUE FABRIC

3430142

KELCI WOMEN POLO



SIDE VIEW



BACK VIEW



OUR CLASSIC CHEVRONS



COTTON-POLYESTER

PRODUCT DESCRIPTION

- The hummel polo t-shirt is crafted with pique fabric which has a subtle pattern and texture in the fabric weave.
- The t-shirt has a two-button neck opening and short sleeves for comfort.

SIZES AVAILABLE

S-XXXL

MRP: INR 1499/-

COMPOSITION: COTTON-POLYESTER

GSM: 220 approx.

SIZE CHART

SIZES	S	M	L	XL	XXL	XXXL
FRONT LENGHT	25	25 1/2	26	26 1/2	27	27 1/2
CHEST	35	37	39	41	43	45

COLOR CODE



Black
2001



SOFT COLLAR



SOFT TOUCH



BIO WASH



PIQUE FABRIC

3430142

KELCI WOMEN POLO



SIDE VIEW



BACK VIEW



OUR CLASSIC CHEVRONS



COTTON-POLYESTER

PRODUCT DESCRIPTION

- The hummel polo t-shirt is crafted with pique fabric which has a subtle pattern and texture in the fabric weave.
- The t-shirt has a two-button neck opening and short sleeves for comfort.

COMPOSITION: COTTON-POLYESTER
 GSM: 220 approx.

SIZE CHART

SIZES	S	M	L	XL	XXL	XXXL
FRONT LENGTH	25	25 1/2	26	26 1/2	27	27 1/2
CHEST	35	37	39	41	43	45

SIZES AVAILABLE

S-XXXL

MRP: INR 1499/-

COLOR CODE



Grey
2006



SOFT COLLAR



SOFT TOUCH



BIO WASH



PIQUE FABRIC

3430142

KELCI WOMEN POLO



SIDE VIEW



BACK VIEW



OUR CLASSIC CHEVRONS



COTTON-POLYESTER

PRODUCT DESCRIPTION

- The hummel polo t-shirt is crafted with pique fabric which has a subtle pattern and texture in the fabric weave.
- The t-shirt has a two-button neck opening and short sleeves for comfort.

COMPOSITION: COTTON-POLYESTER
 GSM: 220 approx.

SIZE CHART

SIZES	S	M	L	XL	XXL	XXXL
FRONT LENGTH	25	25 1/2	26	26 1/2	27	27 1/2
CHEST	35	37	39	41	43	45

SIZES AVAILABLE

S-XXXL

MRP: INR 1499/-

COLOR CODE



Navy
8118



SOFT COLLAR



SOFT TOUCH



BIO WASH



PIQUE FABRIC

3430142

KELCI WOMEN POLO



SIDE VIEW



BACK VIEW



OUR CLASSIC CHEVRONS



COTTON-POLYESTER

PRODUCT DESCRIPTION

- The hummel polo t-shirt is crafted with pique fabric which has a subtle pattern and texture in the fabric weave.
- The t-shirt has a two-button neck opening and short sleeves for comfort.

SIZES AVAILABLE
S-XXXL

MRP: INR 1499/-

COMPOSITION: COTTON-POLYESTER
 GSM: 220 approx.

SIZE CHART

SIZES	S	M	L	XL	XXL	XXXL
FRONT LENGTH	25	25 1/2	26	26 1/2	27	27 1/2
CHEST	35	37	39	41	43	45

COLOR CODE



White
9001


 KNIT JAQUARD
 COLLAR


SOFT TOUCH



BIO WASH



PIQUE FABRIC

3430124
EUNIKE T-SHIRT B2B POLO

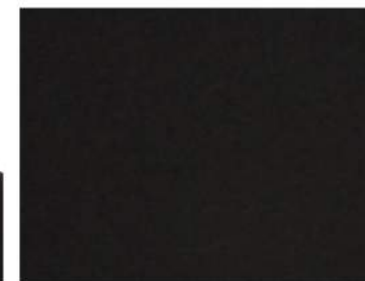

SIDE VIEW



BACK VIEW



OUR CLASSIC CHEVRONS



COTTON-POLYESTER

PRODUCT DESCRIPTION

- The super-premium polo t-shirt is made up of cotton-rich pique fabric with a knit jacquard collar, perfect for formal wear.
- Short sleeves enhance style with contrasting rib giving the maximum style to the silhouette.

 COMPOSITION: COTTON-POLYESTER
 GSM: 220 approx.

SIZE CHART

SIZES	S	M	L	XL	XXL	XXXL
FRONT LENGTH	26	27	28	29	30	31
CHEST	38	40	42	44	46	48

SIZES AVAILABLE

S-XXXL
MRP: INR 1699/-

COLOR CODE


 Black
 2001


 KNIT JAQUARD
 COLLAR


SOFT TOUCH



BIO WASH



PIQUE FABRIC



SIDE VIEW



BACK VIEW



OUR CLASSIC CHEVRONS



COTTON-POLYESTER

PRODUCT DESCRIPTION

- The super-premium polo t-shirt is made up of cotton-rich pique fabric with a knit jacquard collar, perfect for formal wear.
- Short sleeves enhance style with contrasting rib giving the maximum style to the silhouette.

COMPOSITION: COTTON-POLYESTER
 GSM: 220 approx.

SIZE CHART

SIZES	S	M	L	XL	XXL	XXXL
FRONT LENGTH	26	27	28	29	30	31
CHEST	38	40	42	44	46	48

SIZES AVAILABLE

S-XXXL

MRP: INR 1699/-

COLOR CODE


 Blue
 8507

3430124

EUNIKE T-SHIRT B2B POLO



KNIT JAQUARD
COLLAR



SOFT TOUCH



BIO WASH



PIQUE FABRIC

3430124

EUNIKE T-SHIRT B2B POLO



SIDE VIEW



BACK VIEW



OUR CLASSIC CHEVRONS



COTTON-POLYESTER

PRODUCT DESCRIPTION

- The super-premium polo t-shirt is made up of cotton-rich pique fabric with a knit jacquard collar, perfect for formal wear.
- Short sleeves enhance style with contrasting rib giving the maximum style to the silhouette.

COMPOSITION: COTTON-POLYESTER
 GSM: 220 approx.

SIZE CHART

SIZES	S	M	L	XL	XXL	XXXL
FRONT LENGTH	26	27	28	29	30	31
CHEST	38	40	42	44	46	48

SIZES AVAILABLE

S-XXXL

MRP: INR 1699/-

COLOR CODE



Grey
2006



KNIT JAQUARD
COLLAR



SOFT TOUCH



BIO WASH



PIQUE FABRIC



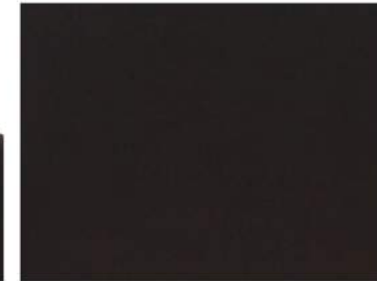
SIDE VIEW



BACK VIEW



OUR CLASSIC CHEVRONS



COTTON-POLYESTER

PRODUCT DESCRIPTION

- The super-premium polo t-shirt is made up of cotton-rich pique fabric with a knit jacquard collar, perfect for formal wear.
- Short sleeves enhance style with contrasting rib giving the maximum style to the silhouette.

SIZES AVAILABLE

S-XXXL

MRP: INR 1699/-

COMPOSITION: COTTON-POLYESTER

GSM: 220 approx.

SIZE CHART

SIZES	S	M	L	XL	XXL	XXXL
FRONT LENGTH	26	27	28	29	30	31
CHEST	38	40	42	44	46	48

COLOR CODE



Black
2001

3430123

EUNICE T-SHIRT B2B POLO



KNIT JAQUARD
COLLAR



SOFT TOUCH



BIO WASH



PIQUE FABRIC

3430123

EUNICE T-SHIRT B2B POLO



SIDE VIEW



BACK VIEW



OUR CLASSIC CHEVRONS



COTTON-POLYESTER

PRODUCT DESCRIPTION

- The super-premium polo t-shirt is made up of cotton-rich pique fabric with a multicolour knit jacquard collar, perfect for formal wear.
- Short sleeves enhance style with contrasting rib giving the maximum style to the silhouette.

SIZES AVAILABLE

S-XXXL

MRP: INR 1699/-

COMPOSITION: COTTON-POLYESTER

GSM: 220 approx.

SIZE CHART

SIZES	S	M	L	XL	XXL	XXXL
FRONT LENGTH	26	27	28	29	30	31
CHEST	38	40	42	44	46	48

COLOR CODE



Olive
6784



KNIT JAQUARD
COLLAR



SOFT TOUCH



BIO WASH



PIQUE FABRIC

3430123

EUNICE T-SHIRT B2B POLO



SIDE VIEW



BACK VIEW



OUR CLASSIC CHEVRONS



COTTON-POLYESTER

PRODUCT DESCRIPTION

- The super-premium polo t-shirt is made up of cotton-rich pique fabric with a multicolour knit jacquard collar, perfect for formal wear.
- Short sleeves enhance style with contrasting rib giving the maximum style to the silhouette.

SIZES AVAILABLE

S-XXXL

MRP: INR 1699/-

COMPOSITION: COTTON-POLYESTER

GSM: 220 approx.

SIZE CHART

SIZES	S	M	L	XL	XXL	XXXL
FRONT LENGTH	26	27	28	29	30	31
CHEST	38	40	42	44	46	48

COLOR CODE



White
9001

SNAP BUTTON

ANTI-ODOR

SOFT TOUCH

MOISTURE
ABSORBENT

BEE-COOL
TECHNOLOGY

ANTI-SHRINK

3430152

JAYE B2B POLY POLO



SIDE VIEW



BACK VIEW



OUR CLASSIC CHEVRONS



POLYESTER

PRODUCT DESCRIPTION

- Made with breathable mesh fabric with honeycomb weave, the polo t-shirt works as a training top as well as a part of a casual outfit.
- The anti-odor and anti-shrinkage fabric make it durable.
- The silhouette offers a snap button adding up to the element and short sleeves.

COMPOSITION: 100% POLYESTER
 GSM: 190 approx.

SIZE CHART

SIZES	S	M	L	XL	XXL	XXXL
FRONT LENGTH	26	27	28	29	30	31
CHEST	38	40	42	44	46	48

SIZES AVAILABLE
S-XXXL

MRP: INR 1599/-

COLOR CODE



*Recycled fabric also available



SNAP BUTTON



ANTI-ODOR



SOFT TOUCH



MOISTURE
 ABSORBENT



BEE-COOL
 TECHNOLOGY



ANTI-SHRINK

3430152

JAYE B2B POLY POLO



SIDE VIEW



BACK VIEW



OUR CLASSIC CHEVRONS



COTTON-POLYESTER

PRODUCT DESCRIPTION

- Made with breathable mesh fabric with honeycomb weave, the polo t-shirt works as a training top as well as a part of a casual outfit.
- The anti-odor and anti-shrinkage fabric make it durable.
- The silhouette offers a snap button adding up to the element and short sleeves.

COMPOSITION: 100% POLYESTER
 GSM: 190 approx.

SIZE CHART

SIZES	S	M	L	XL	XXL	XXXL
FRONT LENGTH	26	27	28	29	30	31
CHEST	38	40	42	44	46	48

SIZES AVAILABLE

S-XXXL

MRP: INR 1599/-

COLOR CODE



BLACK
 2001

*Recycled fabric also available

SNAP BUTTON

ANTI-ODOR

SOFT TOUCH

MOISTURE ABSORBENT

BEE-COOL TECHNOLOGY

ANTI-SHRINK

3430152

JAYE B2B POLY POLO

SIDE VIEW

BACK VIEW

OUR CLASSIC CHEVRONS

COTTON-POLYESTER

PRODUCT DESCRIPTION

- Made with breathable mesh fabric with honeycomb weave, the polo t-shirt works as a training top as well as a part of a casual outfit.
- The anti-odor and anti-shrinkage fabric make it durable.
- The silhouette offers a snap button adding up to the element and short sleeves.

COMPOSITION: 100% POLYESTER
 GSM: 190 approx.

SIZE CHART

SIZES	S	M	L	XL	XXL	XXXL
FRONT LENGTH	26	27	28	29	30	31
CHEST	38	40	42	44	46	48

SIZES AVAILABLE

S-XXXL

MRP: INR 1599/-

COLOR CODE



*Recycled fabric also available



ELASTIC TRIM
AROUND THE
HOOD



LIGHTWEIGHT



ANTI-ODOR



SOFT TOUCH



BEE-COOL
TECHNOLOGY

3430115

VICTOR WINDBREAKER JACKET



SIDE VIEW



BACK VIEW



OUR CLASSIC CHEVRONS



NS

PRODUCT DESCRIPTION

- The windbreaker jacket features an elasticated hood with front zip for utmost comfort.
- It comes with windproof functional fabric and a contrasting label on the hem with our classic chevrons for enhanced style.

SIZES AVAILABLE

S-XXXL

MRP: INR 3299/-

COMPOSITION: NS

SIZE CHART

SIZES	S	M	L	XL	XXL	XXXL
FRONT LENGTH	26	27	28	29	30	31
CHEST	38	40	42	44	46	48

COLOR CODE



Navy
7003



ELASTIC TRIM
AROUND THE
HOOD



LIGHTWEIGHT



ANTI-ODOR



SOFT TOUCH



BEE-COOL
TECHNOLOGY

3430115

VICTOR WINDBREAKER JACKET



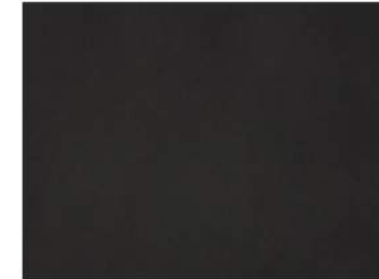
SIDE VIEW



BACK VIEW



OUR CLASSIC CHEVRONS



NS

PRODUCT DESCRIPTION

- The windbreaker jacket features an elasticated hood with front zip for utmost comfort.
- It comes with windproof functional fabric and a contrasting label on the hem with our classic chevrons for enhanced style.

COMPOSITION: NS

SIZE CHART

SIZES	S	M	L	XL	XXL	XXXL
FRONT LENGTH	26	27	28	29	30	31
CHEST	38	40	42	44	46	48

SIZES AVAILABLE

S-XXXL

MRP: INR 3299/-

COLOR CODE



Black
2001



CREW NECK



SOFT TOUCH



BIO WASH

3430117

EDUK SWEATSHIRT



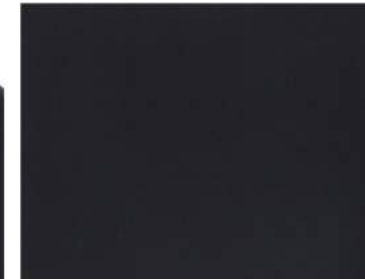
SIDE VIEW



BACK VIEW



PRINTED CHEVRONS ON BACK NECK



COTTON/POLY BLEND FLEECE

PRODUCT DESCRIPTION

- The classic hummel sweatshirt in crew neck.
- Made with cotton-rich sweat fabric that's brushed inside.
- The silhouette offers a regular fit for utmost comfort.

SIZES AVAILABLE

S-XXXL

MRP: INR 2899/-

COMPOSITION: COTTON/POLY BLEND FLEECE

GSM: 220 approx.

SIZE CHART

SIZES	S	M	L	XL	XXL	XXXL
FRONT LENGTH	26	27	28	29	30	31
CHEST	38	40	42	44	46	48

COLOR CODE



NAVY
7003



CREW NECK



SOFT TOUCH



BIO WASH

3430117
EDUK SWEATSHIRT


SIDE VIEW



BACK VIEW



PRINTED CHEVRONS ON BACK NECK



COTTON/POLY BLEND FLEECE

PRODUCT DESCRIPTION

- The classic hummel sweatshirt in crew neck.
- Made with cotton-rich sweat fabric that's brushed inside.
- The silhouette offers a regular fit for utmost comfort.

SIZES AVAILABLE
S-XXXL
MRP: INR 2899/-

 COMPOSITION: COTTON/POLY BLEND FLEECE
 GSM: 220 approx.

SIZE CHART

SIZES	S	M	L	XL	XXL	XXXL
FRONT LENGTH	26	27	28	29	30	31
CHEST	38	40	42	44	46	48

COLOR CODE

 BLACK
 2001



HOODIE WITH FRONT ZIPPER



SOFT TOUCH



BIO WASH

3430118

ELWIN B2B ZIPPER HOODIE



SIDE VIEW



BACK VIEW



ATTACHED HOODIE



COTTON/POLY BLEND

PRODUCT DESCRIPTION

- The hummel hoodie comes with pockets on both sides.
- It features a front zip for utmost comfort.
- The hood has drawstrings and stoppers for adjustment.

SIZES AVAILABLE

S-XXXL

MRP: INR 3399/-

COMPOSITION: COTTON/POLY BLEND FLEECE
 GSM: 220 approx.

SIZE CHART

SIZES	S	M	L	XL	XXL	XXXL
FRONT LENGTH	26	27	28	29	30	31
CHEST	38	40	42	44	46	48

COLOR CODE



Black 2001


 HOODIE WITH
 FRONT ZIPPER


SOFT TOUCH



BIO WASH

3430118
ELWIN B2B ZIPPER HOODIE

PAGE 54



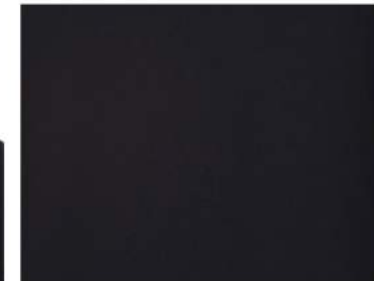
SIDE VIEW



BACK VIEW



ATTACHED HOODIE



COTTON/POLY BLEND

PRODUCT DESCRIPTION

- The hummel hoodie comes with pockets on both sides.
- It features a front zip for utmost comfort.
- The hood has drawstrings and stoppers for adjustment.

SIZES AVAILABLE
S-XXXL
MRP: INR 3399/-

 COMPOSITION: COTTON/POLY BLEND FLEECE
 GSM: 220 approx.

SIZE CHART

SIZES	S	M	L	XL	XXL	XXXL
FRONT LENGTH	26	27	28	29	30	31
CHEST	38	40	42	44	46	48

COLOR CODE

 NAVY
 7003



FRONT ZIPPER



BIO WASH

3430119

ELAN B2B ZIPPER JACKET



SIDE VIEW



BACK VIEW



PRINTED CHEVRONS ON BACK NECK



COTTON/POLY BLEND

PRODUCT DESCRIPTION

- The hummel jacket comes with pockets on both sides.
- It features a front zip for utmost comfort.
- It comes with iconic chevrons at the back for enhanced style.

SIZES AVAILABLE

S-XXXL

MRP: INR 2999/-

COMPOSITION: COTTON/POLY BLEND FLEECE

GSM: 220 approx.

SIZE CHART

SIZES	S	M	L	XL	XXL	XXXL
FRONT LENGTH	26	27	28	29	30	31
CHEST	38	40	42	44	46	48

COLOR CODE



GREY
2007



FRONT ZIPPER



BIO WASH

3430119
ELAN B2B ZIPPER JACKET

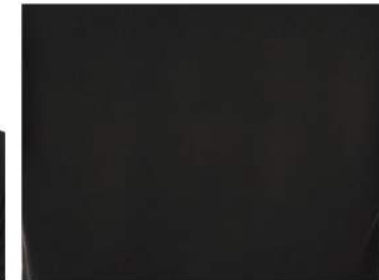

SIDE VIEW



BACK VIEW



PRINTED CHEVRONS ON BACK NECK



COTTON/POLY BLEND

PRODUCT DESCRIPTION

- The hummel jacket comes with pockets on both sides.
- It features a front zip for utmost comfort.
- It comes with iconic chevrons at the back for enhanced style.

SIZES AVAILABLE
S-XXXL
MRP: INR 2999/-

 COMPOSITION: COTTON/POLY BLEND FLEECE
 GSM: 220 approx.

SIZE CHART

SIZES	S	M	L	XL	XXL	XXXL
FRONT LENGTH	26	27	28	29	30	31
CHEST	38	40	42	44	46	48

COLOR CODE

 Black
2001



3430237

VENNE SLEEVELESS BOMBER JACKET



SIDE VIEW



BACK VIEW



QUILTED JACKET



100% POLYESTER

PRODUCT DESCRIPTION

- Sleeveless
- Lightweight
- Quilted Jacket
- Turtle Neck Collar
- Zipper Pockets Both Sides
- Front Zipper

SIZES AVAILABLE

S-XXXL

MRP: INR 3999/-

COMPOSITION : 100% POLYESTER
 GSM : 75 approx.

SIZE CHART

SIZES	S	M	L	XL	XXL	XXXL
FRONT LENGTH	26	27	28	29	30	31
CHEST	38	40	42	44	46	48

COLOR CODE



Black
2001



3430237

VENNE SLEEVELESS BOMBER JACKET



SIDE VIEW



BACK VIEW



QUILTED JACKET



100% POLYESTER

PRODUCT DESCRIPTION

- Sleeveless
- Lightweight
- Quilted Jacket
- Turtle Neck Collar
- Zipper Pockets Both Sides
- Front Zipper

SIZES AVAILABLE

S-XXXL

MRP: INR 3999/-

COMPOSITION : 100% POLYESTER
 GSM : 75 approx.

SIZE CHART

SIZES	S	M	L	XL	XXL	XXXL
FRONT LENGTH	26	27	28	29	30	31
CHEST	38	40	42	44	46	48

COLOR CODE



Navy
7003



STAND UP COLLAR



MESH LINING



SOFT TOUCH



ANTI-ODOR



BEECOOL
TECHNOLOGY

3430129

ABIS B2B TRACKSUIT



SIDE VIEW



BACK VIEW



COLOR BLOCK DESIGN



NS

PRODUCT DESCRIPTION

- The tracksuit has color block design with stand up collar for defined look.
- It features front zip and pockets on both sides for utmost comfort.

COMPOSITION: NS

SIZE CHART

SIZES	S	M	L	XL	XXL	XXXL
FRONT LENGTH	26	27	28	29	30	31
CHEST	38	40	42	44	46	48

SIZES AVAILABLE

S-XXXL

MRP:

UPPER: INR 3799/-

TRACKSUIT: INR 4599/-

COLOR CODE



NAVY
7003



FRONT ZIPPER



SOFT TOUCH



ANTI-ODOR



BEECOOL
TECHNOLOGY

3430130

BRENN B2B TRACKSUIT



SIDE VIEW



BACK VIEW



OUR CLASSIC CHEVRONS/BUMBLEBEE
LOGO



NS

PRODUCT DESCRIPTION

- The tracksuit features front zip and pockets on both sides for utmost comfort.
- The silhouette offers regular fit for ease in the movement.
- It is all lined with comfortable soft mesh.

COMPOSITION: NS

SIZE CHART

SIZES	S	M	L	XL	XXL	XXXL
FRONT LENGTH	26	27	28	29	30	31
CHEST	38	40	42	44	46	48

SIZES AVAILABLE

S-XXXL

MRP:

UPPER: INR 3599/-

TRACKSUIT: INR 4399/-

COLOR CODE



Black
2001



FRONT ZIPPER



SOFT TOUCH



ANTI-ODOR



BEECOOL
TECHNOLOGY

3430131

EDMONDO B2B TRACKSUIT



SIDE VIEW



BACK VIEW



OUR CLASSIC CHEVRONS



NS

PRODUCT DESCRIPTION

- This hummel tracksuit ticks all the right boxes.
- This is made with premium polyester fabric.
- It features a front zipper with pockets.
- The garment is lined with soft mesh fabric for comfort.
- The silhouette offers a regular fit for utmost comfort.

COMPOSITION: NS

SIZE CHART

SIZES	S	M	L	XL	XXL	XXXL
FRONT LENGTH	26	27	28	29	30	31
CHEST	38	40	42	44	46	48

SIZES AVAILABLE

S-XXXL

MRP:

UPPER: INR 3599/-

TRACKSUIT: INR 4499/-

COLOR CODE



Black
2001



FRONT ZIPPER



SOFT TOUCH



ANTI-ODOR



BEECOOL
TECHNOLOGY

3430132

ELOV B2B TRACKSUIT



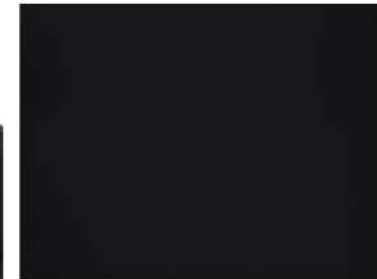
SIDE VIEW



BACK VIEW



OUR CLASSIC CHEVRONS



NS

PRODUCT DESCRIPTION

- The tracksuit features front zip and pockets both sides for utmost comfort.
- The silhouette offers regular fit for ease in the movement.
- It is all lined with comfortable soft mesh.

COMPOSITION: NS

SIZE CHART

SIZES	S	M	L	XL	XXL	XXXL
FRONT LENGTH	26	27	28	29	30	31
CHEST	38	40	42	44	46	48

SIZES AVAILABLE

S-XXXL

MRP:

UPPER: INR 3799/-

TRACKSUIT: INR 4299/-


COLOR CODE



Black
2001



www.hummel.net.in

 care@hummelindia.in